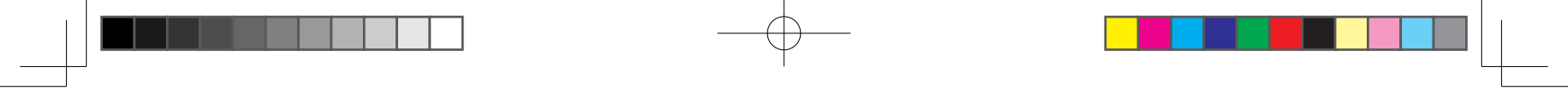


**DARK  
NESS**

# Cosmetic Tools

化粧工具





假睫毛胶水 & 双眼皮液

# Eyelash & Double Eyelid Glue

双用胶水！无论是贴假睫毛，  
还是打造双眼皮，  
只需一支DARKNESS双眼皮液，轻松搞定！  
请放心选择韩国NO.1品牌 - DARKNESS。

## Two Function Glue!

When putting on eyelashes or making double eyelids,  
It's easy to use just one Darkness double eyelid solution!  
Trust and use it in Darkness,  
Korea's No. 1 brand.



假睫毛胶水 & 双眼皮液

# Eyelash & Double Eyelid Glue

对人体无害的假睫毛胶水 & 双眼皮液 / Safe Eyelash & Double Eyelid

耐汗耐水，持久定型 / Long-lasting Resistance to Sweat and Moisture

这是一款对人体无害的皮肤专用胶水，粘性优异，耐汗耐水，可长时间保持固定效果。即使是汗水和水，仍能保持出色的粘合力，便于固定假睫毛和双眼皮。卸除胶水时，使用温水即可轻松清洁。

This glue is specially formulated to be safe for skin and offers excellent adhesion. It is highly resistant to sweat and moisture, ensuring long-lasting hold.

Additionally, it maintains strong adhesion even after freezing and thawing, making it easy to secure both eyelashes and double eyelids. For clean removal, use lukewarm water to gently dissolve the glue.



自检编号(Internal InspectionNo.)

FB20-19-0071

ITEM NO : DEC-0400

ITEM NAME : 假睫毛胶水& 双眼皮液(白色)

Darkness Eyelash & Double Eyelid Glue (White)

容量(Capacity) : 5g

## 打造双眼皮(Creating Double Eyelids)



1. 沿着想要打造双眼皮的眼部线条，涂抹宽度约2~3毫米的双眼皮胶水。  
Apply a 2~3 mm wide line of the double eyelid glue along the desired crease line on the eyelid.
2. 涂抹双眼皮胶水后，等待20~30秒，当胶水变透明时，用工具轻按眼皮即可。  
After applying the glue, wait 20~30 seconds until it turns transparent and press the eyelid gently with a stick to form the crease.
3. 卸除时，将化妆棉沾温水，轻敷在眼部片刻后轻柔揭除。  
To remove, soak a cotton pad with lukewarm water, press it gently on the eye area, and then peel it off.



假睫毛胶水

# Eyelash Glue

对人体无害的假睫毛胶水 / Safe Eyelash

耐汗耐水，持久定型 / Long-lasting Resistance to Sweat and Moisture

这是一款对人体无害的皮肤专用胶水，粘性优异，耐汗耐水，可长时间保持固定效果。即使是汗水和水，仍能保持卓越的粘合力，便于固定假睫毛。卸除胶水时，使用温水即可轻松清洁。

This glue is specially formulated to be safe for skin and offers excellent adhesion. It is highly resistant to sweat and moisture, ensuring long-lasting hold.

Additionally, it maintains strong adhesion even after freezing and thawing, making it easy to secure both eyelashes and double eyelids. For clean removal, use lukewarm water to gently dissolve the glue.



自检编号(Internal Inspection No.)

FB20-19-0069

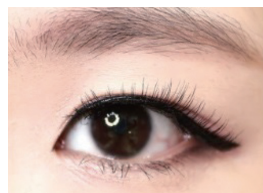
ITEM NO : DEC-0403

ITEM NAME : 假睫毛胶水(黑色)

Darkness Eyelash Glue (Black)

容量(Capacity) : 5g

## 打造假睫毛(Applying False Eyelashes)



1. 将胶水均匀涂抹在假睫毛根部。  
Evenly apply the glue onto the false eyelashes.
2. 涂抹胶水后，等待20~30秒，直到胶水变透明。  
Wait 20~30 seconds for the glue to become transparent.
3. 胶水变透明后，贴上假睫毛即可。  
Once the glue is transparent, attach the false eyelashes.

For Your Beauty,,, 7





双眼皮贴

# Double Eyelid Tapes

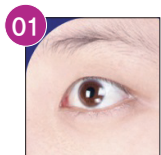
自然得就像自己的眼睛一样！  
只需贴在想要打造双眼皮的位置即可！  
想要什么形状、什么位置、什么大小都可以！  
3秒魔法，立现有神双眸！

**Just like my eyes, naturally!**  
If you put it on the area you want to make double eyelids,  
it's complete! Just like the shape you want!  
Just like the size you want!  
Use 3-second magic to make your eyes look clear!



双眼皮贴使用小贴士！

## Tips for Double Eyelid Tape



**01** 贴双眼皮贴之前，  
请先清洁预贴部位！  
Before applying the double eyelid tape,  
wipe up the area thoroughly to remove  
any oil or makeup.



**07** 用Y字型工具将双眼皮贴的下缘向上轻推，原  
本未贴合皮肤、露在外侧的胶面会自然贴入皮  
肤内侧，从而形成自然的双眼皮线条。  
Use the Y-shaped stick to gently push the  
lower part of the tape upward. As the adhesive  
on the exposed side moves inward between  
the upper and lower eyelid skin, it forms



**02** 使用产品内附的Y字型工具，找出想要  
打造双眼皮的位置。  
Use the included Y-shaped stick to draw  
the desired crease line.



**08** 双眼皮贴会嵌入上眼皮与下眼皮之间，自  
然形成双眼皮线条。  
The tape will settle between the layers of  
skin, creating a natural crease.



**03** 从胶带顶部剥下白色背衬纸。  
Peel off the white paper backing from the  
top part of the tape.



**09** 当双眼皮贴贴合良好时，可用手指或Y字  
型工具轻轻按压片刻，帮助固定贴合位  
置，使其更稳定。  
If the tape is properly applied, gently press  
the area with your hand or the Y-shaped  
stick for a few seconds to secure it.



**04** 将Y形棒带棱纹的一面轻轻贴到透明胶  
带上，然后将其从底部的透明背衬上  
剥离。  
Gently attach about half of the Y-shaped  
stick's ridged side to the transparent  
tape and peel it off from the clear backing  
on the bottom.



**10** 双眼皮完成效果如图所示。  
The double eyelid is now complete.



**05** 将双眼皮贴的上缘对准预定的双眼皮  
线条，贴在眼皮上。  
Align the top edge of the tape with the  
desired crease line and apply it.



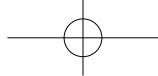
**11** 卸除时，请先从贴在上眼皮的一侧开  
始撕下。（若为单面型，请从一侧轻轻  
揭起即可。）  
To remove, start from the part attached to  
the upper eyelid. (For single-sided tape,  
gently peel off from any side.)



**06** 贴好理想位置后，将Y字型工具从双眼  
皮贴上取下。  
Once the tape is in place, detach the  
Y-shaped stick from the tape.



**12** 请轻轻从一侧开始慢慢撕除。（可将化  
妆棉沾温水，轻敷在眼部片刻后再轻  
柔取下。）  
Carefully peel it off from any side. (You can  
also soak a cotton pad in lukewarm water,  
place it on the eyelid, and then gently  
remove the tape.)



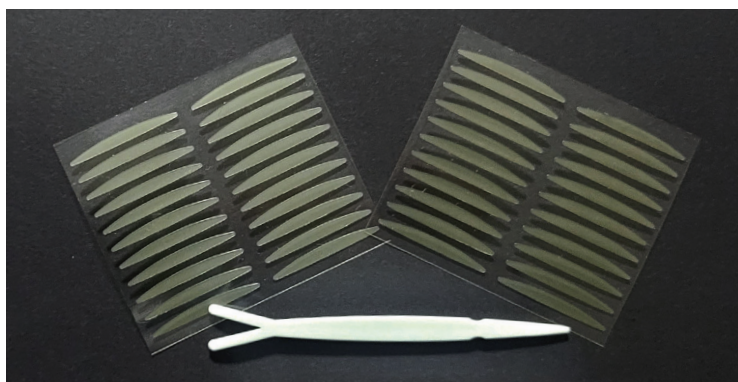
Secret Magic 单面双眼皮贴 (透明: 标准型)

# Secret Magic One-Sided Double Eyelid Tape (Clear: Standard Type)

用隐形裸色双眼皮贴，打造自然迷人的双眸!!

Create beautiful eyes with invisible nude double eyelid tape!

- 打造自然双眼皮效果。  
Creates natural-looking double eyelids.
- 贴上后可自然搭配眼线与眼影妆容。  
Allows for smooth application of eyeliners and eyeshadows on top.
- 根据眼型进行的自我塑形美化。  
DIY eye shaping to fit your natural eye contour.



ITEM NO : DEK-0448

ITEM NAME : Secret Magic 单面双眼皮贴(透明: 标准型)

Secret Magic One-Sided Double Eyelid Tape (Clear: Standard Type)



## 使用方法(How to Use)

1. 请彻底清洁眼部周围的彩妆与油脂。  
Wipe up the eye area to remove any makeup or oil.
2. 确定想要打造双眼皮的位置。  
Decide where you want to create the double eyelid.
3. 将双眼皮贴贴上并轻轻按压固定。  
Place the tape on the desired area and press gently.
4. 建议沿着原有眼褶线贴合，但根据个人眼型，贴合位置可能有所不同。  
It is recommended that you apply the tape along the natural crease line, but the ideal placement may vary depending on the shape of your eyes.
5. 贴好后，可使用附带的工具进一步打造更清晰自然的双眼皮线条。  
After applying the tape, use the included stick to define and enhance the crease for a more natural-looking double eyelid.

※ 本图片颜色可能与实物略有差异。  
※ The color shown in the image may differ slightly from the actual product.

For Your Beauty,,, 11





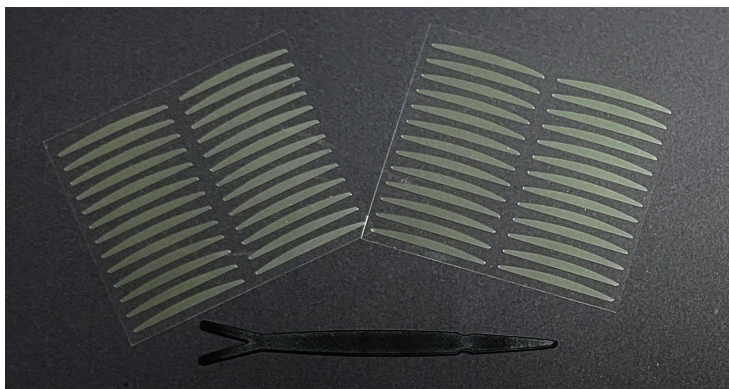
Secret Magic 单面双眼皮贴 (透明: 薄型)

# Secret Magic One-Sided Double Eyelid Tape (Clear: Thin Type)

用隐形裸色双眼皮贴, 打造自然迷人的双眸!!

Create beautiful eyes with invisible nude double eyelid tape!

- 自然打造双眼皮效果。  
Creates natural-looking double eyelids.
- 贴上后可自然搭配眼线与眼影妆容。  
Allows for smooth application of eyeliners and eyeshadows on top.
- 根据眼型进行的自我塑形美妆。  
DIY eye shaping to fit your natural eye contour.



ITEM NO : DEK-0481

ITEM NAME : Secret Magic 单面双眼皮贴(透明: 薄型)

Secret Magic One-Sided Double Eyelid Tape (Clear: Thin Type)

## 使用方法(How to Use)

1. 请彻底清洁眼部周围的彩妆与油脂。  
Wipe up the eye area to remove any makeup or oil.
2. 确定想要打造双眼皮的位置。  
Decide where you want to create the double eyelid.
3. 将双眼皮贴贴上并轻轻按压固定。  
Place the tape on the desired area and press gently.
4. 建议沿着原有眼褶线贴合, 但根据个人眼型, 贴合位置可能有所不同。  
It is recommended that you apply the tape along the natural crease line, but the ideal placement may vary depending on the shape of your eyes.
5. 贴好后, 可使用附带的工具进一步打造更清晰自然的双眼皮线条。  
After applying the tape, use the included stick to define and enhance the crease for a more natural-looking double eyelid.

※ 本图片颜色可能与实物略有差异。

※ The color shown in the image may differ slightly from the actual product.

For Your Beauty,,, 12



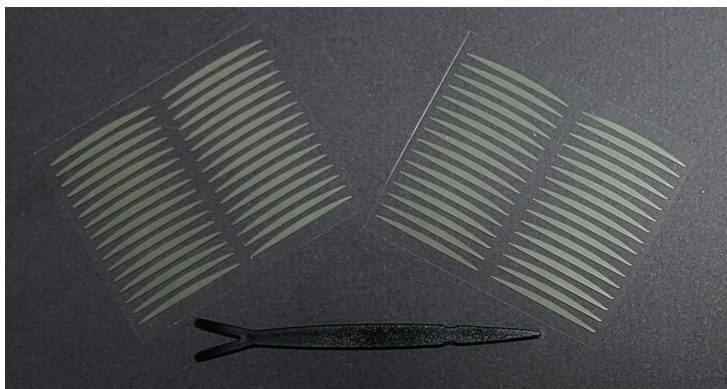
Secret Magic 单面双眼皮贴 (透明: 超薄型)

# Secret Magic One-Sided Double Eyelid Tape (Clear: Super Thin Type)

用隐形裸色双眼皮贴，打造自然迷人的双眸!!

Create beautiful eyes with invisible nude double eyelid tape!

- 自然打造双眼皮效果。  
Creates natural-looking double eyelids.
- 可在其上自然涂抹眼线与眼影妆容。  
Allows for smooth application of eyeliners and eyeshadows on top.
- 根据眼型进行自我美化塑形。  
DIY eye shaping to fit your natural eye contour.



ITEM NO : DEK-0482

ITEM NAME : Secret Magic 单面双眼皮贴(透明: 超薄型)  
Secret Magic One-Sided Double Eyelid Tape (Clear: Super Thin Type)

## 使用方法(How to Use)

1. 请彻底清洁眼部周围的彩妆与油脂。  
Wipe up the eye area to remove any makeup or oil.
2. 确定想要打造双眼皮的位置。  
Decide where you want to create the double eyelid.
3. 将双眼皮贴贴上并轻轻按压固定。  
Place the tape on the desired area and press gently.
4. 建议沿着原有眼褶线贴合，但根据个人眼型，贴合位置可能有所不同。  
It is recommended that you apply the tape along the natural crease line, but the ideal placement may vary depending on the shape of your eyes.
5. 贴好后，可使用附带的工具进一步打造更清晰自然的双眼皮线条。  
After applying the tape, use the included stick to define and enhance the crease for a more natural-looking double eyelid.

※ 本图片颜色可能与实物略有差异。  
※ The color shown in the image may differ slightly from the actual product.

For Your Beauty,,, 13



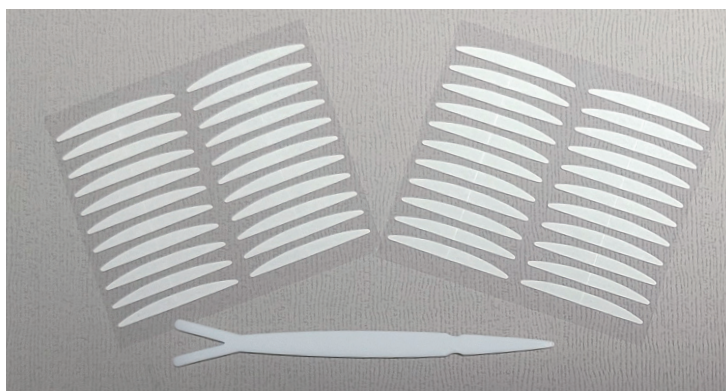
Secret Magic 双面双眼皮贴 (标准型)

# Secret Magic Double-Sided Double Eyelid Tape(Standard Type)

用隐形裸色双眼皮贴，打造自然迷人的双眸!!

Create beautiful eyes with invisible nude double eyelid tape!

- 使用双面双眼皮贴，自然打造立体双眼皮效果。  
Creates natural-looking double eyelids with double-sided tape.
- 贴上后可自然叠加眼线和眼影妆容。  
Allows smooth application of eyeliners and eyeshadows on top.
- 根据眼型进行自我调整，轻松塑造理想眼型。  
DIY eye shaping to match the natural contour of your eyes.
- 采用美国3M医用胶带，对皮肤无刺激。  
Made with U.S. 3M medical-grade tape, gentle on the skin.



ITEM NO : DEK-0719

ITEM NAME : Secret Magic 双面双眼皮贴 (标准型)

Secret Magic Double-Sided Double Eyelid Tape(Standard Type)



## 使用方法(How to Use)

1. 请彻底清洁眼部周围的彩妆与油脂。  
Wipe up the eye area to remove any makeup or oil.
2. 确定想要打造双眼皮的位置。  
Decide where you want to create the double eyelid.
3. 将双眼皮贴贴上并轻轻按压固定。  
Place the tape on the desired area and press gently.
4. 建议沿着原有眼褶线贴合，但根据个人眼型，贴合位置可能有所不同。  
It is recommended that you apply the tape along the natural crease line, but the ideal placement may vary depending on the shape of your eyes.
5. 贴好后，可使用附带的工具进一步打造更清晰自然的双眼皮线条。  
After applying the tape, use the included stick to define and enhance the crease for a more natural-looking double eyelid.

※ 本图片颜色可能与实物略有差异。  
※ The color shown in the image may differ slightly from the actual product.

For Your Beauty,,, 14





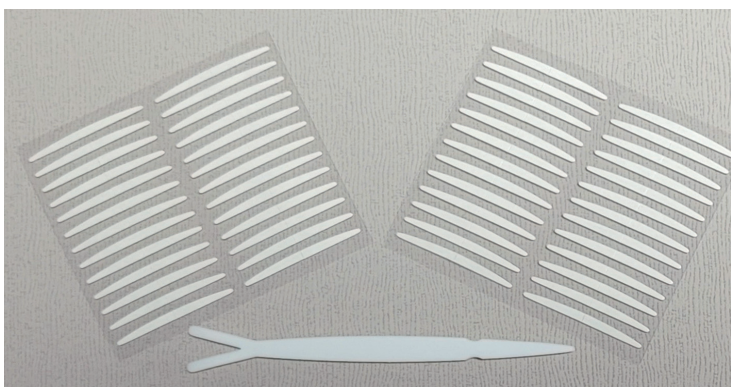
Secret Magic 双面双眼皮贴 (薄型)

# Secret Magic Double-Sided Double Eyelid Tape (Thin Type)

用隐形裸色双眼皮贴，打造自然迷人的双眸!!

Create beautiful eyes with invisible nude double eyelid tape!

- 使用双面双眼皮贴，自然打造立体双眼皮效果。  
Creates natural-looking double eyelids with double-sided tape.
- 贴上后可自然叠加眼线和眼影妆容。  
Allows smooth application of eyeliners and eyeshadows on top.
- 根据眼型进行自我调整，轻松塑造理想眼型。  
DIY eye shaping to match the natural contour of your eyes.
- 采用美国3M医用胶带，对皮肤无刺激。  
Made with U.S. 3M medical-grade tape, gentle on the skin.



ITEM NO : DEK-0436

ITEM NAME : Secret Magic 双面双眼皮贴 (薄型)

Secret Magic Double-Sided Double Eyelid Tape (Thin Type)



## 使用方法(How to Use)

1. 请彻底清洁眼部周围的彩妆与油脂。  
Wipe up the eye area to remove any makeup or oil.
2. 确定想要打造双眼皮的位置。  
Decide where you want to create the double eyelid.
3. 将双眼皮贴贴上并轻轻按压固定。  
Place the tape on the desired area and press gently.
4. 建议沿着原有眼褶线贴合，但根据个人眼型，贴合位置可能有所不同。  
It is recommended that you apply the tape along the natural crease line, but the ideal placement may vary depending on the shape of your eyes.
5. 贴好后，可使用附带的工具进一步打造更清晰自然的双眼皮线条。  
After applying the tape, use the included stick to define and enhance the crease for a more natural-looking double eyelid.

※ 本图片颜色可能与实物略有差异。  
※ The color shown in the image may differ slightly from the actual product.

For Your Beauty,,, 15



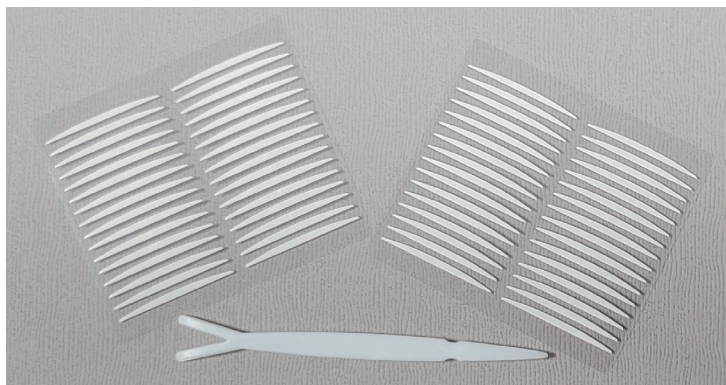
Secret Magic 双面双眼皮贴 (超薄型)

# Secret Magic Double-Sided Double Eyelid Tape(Super Thin Type)

用隐形裸色双眼皮贴，打造自然迷人的双眸!!

Create beautiful eyes with invisible nude double eyelid tape!

- 使用双面双眼皮贴，自然打造立体双眼皮效果。  
Creates natural-looking double eyelids with double-sided tape.
- 贴上后可自然叠加眼线和眼影妆容。  
Allows smooth application of eyeliners and eyeshadows on top.
- 根据眼型进行自我调整，轻松塑造理想眼型。  
DIY eye shaping to match the natural contour of your eyes.
- 采用美国3M医用胶带，对皮肤无刺激。  
Made with U.S. 3M medical-grade tape, gentle on the skin.



ITEM NO : DEK-0439

ITEM NAME : Secret Magic 双面双眼皮贴 (超薄型)

Secret Magic Double-Sided Double Eyelid Tape(Super Thin Type)



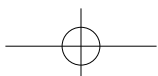
## 使用方法(How to Use)

1. 请彻底清洁眼部周围的彩妆与油脂。  
Wipe up the eye area to remove any makeup or oil.
2. 确定想要打造双眼皮的位置。  
Decide where you want to create the double eyelid.
3. 将双眼皮贴贴上并轻轻按压固定。  
Place the tape on the desired area and press gently.
4. 建议沿着原有眼褶线贴合，但根据个人眼型，贴合位置可能有所不同。  
It is recommended that you apply the tape along the natural crease line, but the ideal placement may vary depending on the shape of your eyes.
5. 贴好后，可使用附带的工具进一步打造更清晰自然的双眼皮线条。  
After applying the tape, use the included stick to define and enhance the crease for a more natural-looking double eyelid.

※ 本图片颜色可能与实物略有差异。  
※ The color shown in the image may differ slightly from the actual product.

For Your Beauty,,, 16







眉毛修剪刀

# Eyebrow Razor

有品味人士的必备之选！

助你精致细致护理的DARKNESS美妆工具！

**A must-have for sensible people!**

Darkness beauty tools to help thorough and careful management

双层眉毛修剪刀

# Eyebrow Razor – Folding Blade

- 整洁的第一印象，从眉毛开始！  
The neatness of your first impression starts with well-groomed eyebrows!
- 请勿用力过猛，斜着轻轻修整眉毛即可～  
Gently and effortlessly trim your brows by holding the razor at an angle.



ITEM NO : DTK-1131

ITEM NAME : 双层眉毛修剪刀36P

Eyebrow Razor – Folding Blade 36P

Made in Korea

For Your Beauty,,, 20





单层眉毛修剪刀

## Eyebrow Razor – Single Blade

- 整洁的第一印象，从眉毛开始！  
The neatness of your first impression starts with well-groomed eyebrows!
- 请勿用力过猛，斜着轻轻修整眉毛即可～  
Gently and effortlessly trim your brows by holding the razor at an angle.

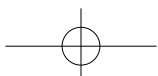


ITEM NO : **DTK-1130**

ITEM NAME : 单层眉毛修剪刀36P

Eyebrow Razor – Single Blade 36P

**Made in Korea**







**DARK  
NESS**

**Cosmetics**

化妆品

巴黎自动眉笔

# Paris Auto Eyebrow Pencil

- 清爽自然  
Clean and natural finish
- 新手也能轻松上手  
Easy and convenient, even for beginners
- 无结块，妆效清晰利落  
Smooth and clump-free

DCK-2201	DCK-2202	DCK-2203
		
01 黑色 Black	02 灰色 Gray	03 棕色 Brown
DCK-2204	DCK-2205	
		
04 黑棕色 Dark Brown	05 灰棕色 Gray Brown	

全成分(Ingredients)
●1号黑色(No. 1 Black) 黑色氧化铁、巴西棕榈蜡、地蜡、漆树果蜡、硬脂酸锌、巴西棕榈叶蜡、黄柏籽油 Black Iron Oxide, Candelilla Wax, Ceresin, Rhus Verniciflua Fruit Wax, Zinc Stearate, Carnauba Wax, Amur Cork Tree Seed Oil
●2号灰色(No. 2 Gray) 红色氧化铁、二氧化钛、巴西棕榈蜡、地蜡、漆树果蜡、硬脂酸锌、巴西棕榈叶蜡、黄柏籽油、蓝色1号、黑色氧化铁 Red Iron Oxide, Titanium Dioxide, Candelilla Wax, Ceresin, Rhus Verniciflua Fruit Wax, Wax, Zinc Stearate, Carnauba Wax, Amur Cork Tree Seed Oil, Blue No. 1, Black Iron Oxide
●3号棕色(No. 3 Brown) 黑色氧化铁、红色氧化铁、巴西棕榈蜡、黄色氧化铁、地蜡、漆树果蜡、硬脂酸锌、巴西棕榈叶蜡、黄柏籽油、黄色4号 Black Iron Oxide, Red Iron Oxide, Candelilla Wax, Yellow Iron Oxide, Ceresin, Rhus Verniciflua Fruit Wax, Zinc Stearate, Carnauba Wax, Amur Cork Tree Seed Oil, Yellow No. 4
●4号深棕色(No. 4 Dark Brown) 黄色氧化铁、黑色氧化铁、巴西棕榈蜡、红色氧化铁、地蜡、漆树果蜡、硬脂酸锌、巴西棕榈叶蜡、黄柏籽油、黄色4号 Yellow Iron Oxide, Black Iron Oxide, Candelilla Wax, Red Iron Oxide, Ceresin, Rhus Verniciflua Fruit Wax, Zinc Stearate, Carnauba Wax, Amur Cork Tree Seed Oil, Yellow No. 4
●5号灰棕色(No. 5 Gray Brown) 黑色氧化铁、巴西棕榈蜡、红色氧化铁、二氧化钛、地蜡、漆树果蜡、硬脂酸锌、巴西棕榈叶蜡、黄柏籽油、黄色氧化铁 Black Iron Oxide, Candelilla Wax, Red Iron Oxide, Titanium Oxide, Ceresin, Rhus Verniciflua Fruit Wax, Zinc Stearate, Carnauba Wax, Amur Cork Tree Seed Oil, Yellow Iron Oxide



ITEM NO : DCK-2201~2205  
ITEM NAME : DARKNESS 巴黎自动眉笔  
Darkness Paris Auto Eyebrow Pencil

## 使用方法(How to Use)

1. 旋转笔芯露出2~3毫米，沿着眉形轻描轮廓，再自然填补稀疏部位。  
Twist the pencil to expose 2 to 3mm of the tip and gently outline your brows following their natural shape. Fill in any sparse areas for a natural look.
2. 使用内置眉刷轻轻晕染，打造自然无痕妆感。  
Use the embedded brush to softly blend and smudge for a seamless finish.

※ 本图片颜色可能与实物略有差异。  
※ The color shown in the image may differ slightly from the actual product.

米兰自动眼线笔

# Milano Auto Eyeliner Pencil

- 呈现清晰自然的眼部妆效  
Creates a clean and natural eye look
- 光滑且柔和  
Smooth and gentle



ITEM NO : **DCK-2221**  
ITEM NAME : **DARKNESS米兰自动眼线笔\_黑色**  
Darkness Milan Auto Eyeliner Pencil \_Black



ITEM NO : **DCK-2222**  
ITEM NAME : **DARKNESS米兰自动眼线笔\_棕色**  
Darkness Milan Auto Eyeliner Pencil \_Brown

## 全成分 (Ingredients)

### ●1号黑色 (No. 1 Black)

黑色氧化铁、氢化大豆油、氢化椰油甘油酯、氢化椰子油、氢化植物油、硬脂酸锌、云母  
Black Iron Oxide, Hydrogenated Soybean Oil, Hydrogenated Coco-Glycerlyze, Hydrogenated Coconut Oil, Hydrogenated Vegetable Oil, Zinc Stearate, Mica

### ●2号棕色 (No. 1 Brown)

氢化大豆油、红色氧化铁、黄色氧化铁、黑色氧化铁、氢化椰油甘油酯、氢化椰子油、氢化植物油、硬脂酸锌  
Hydrogenated Soybean Oil, Red Iron Oxide, Yellow Iron Oxide, Black Iron Oxide, Hydrogenated Coco-Glycerlyze, Hydrogenated Coconut Oil, Hydrogenated Vegetable Oil, Zinc Stearate

## 使用方法 (How to Use)

旋转笔芯露出约2~3毫米后，沿眼线自然描绘。  
Twist the pencil to expose 2 to 3mm of the tip and then gently apply along your eyeline.

※ 本图片颜色可能与实物略有差异。  
※ The color shown in the image may differ slightly from the actual product.

博洛尼亚防水凝胶眼线笔

# Bologna Waterproof Gel Eyeliner Pencil

○ 眼线笔+ 眼影+ 高光三合一= 多功能凝胶眼线笔

Eyeliner + Eyeshadow + Highlighter 3 in 1 = Multi Gel Liner

可兼作眼线笔与眼影的柔滑凝胶型眼线笔，质地柔软无刺激，轻松描绘，快速完成眼妆。具备出色的防水、防汗、防油效果，不易晕染或脱妆，长时间保持初妆般的完美眼线效果。

A soft gel-type eyeliner that can also be used as an eyeshadow as it glides on gently without irritation, allowing for easy and effortless eye makeup. Its powerful waterproof formula resists water, sweat, and sebum, helping to maintain a flawless eyeliner look all day without smudging or fading.



ITEM NO : DCK-2281, 2282

ITEM NAME : DARKNESS 博洛尼亚防水凝胶眼线笔 (内置削笔器)

Darkness Bologna Waterproof Gel Eyeliner Pencil (with Sharpener)

(NO. 1 智慧黑, NO.2 棕眸色)

(NO. 1 Smart Black, NO. 2 Brown Eyes)



内置削笔器，使用更方便！  
It has a sharpener inside!

## 全成分(Ingredients)

### ●1号 智慧黑(No. 1 Smart Black)

三甲基硅氧基硅酸酯、环戊硅氧烷、黑色氧化铁、云母、地蜡、聚乙烯、硬脂酸、C12-15 醇醚己酸酯、聚甘油-2 三异硬脂酸酯、亚铁氰化铁  
Trimethylsiloxyethylsilicate, Cyclopentasiloxane, Black Iron Oxide, Mica, Ceresin, Polyethylene, Stearic Acid, C12-15 Alkyl Ethylhexanoate, Polyglyceryl-2 Trisostearate, Ferric Ferrocyanide

### ●2号 棕眸色(No. 2 Brown Eyes)

氢化大豆油、红色氧化铁、黄色氧化铁、黑色氧化铁、氢化椰油甘油酯、氢化椰子油、氢化植物油、硬脂酸锌  
Hydrogenated Soybean Oil, Red Iron Oxide, Yellow Iron Oxide, Black Iron Oxide, Hydrogenated Coco-Glycerolize, Hydrogenated Coconut Oil, Hydrogenated Vegetable Oil, Zinc Stearate

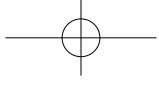
## 使用方法(How to Use)

1. 沿睫毛根部描画，填补睫毛间隙，打造自然眼妆。  
Apply along the lash line, filling in between the lashes for a natural look.
  2. 用指腹轻轻晕开，可替代眼影使用。  
Blend gently with your fingertip to use as an eyeshadow.
  3. 使用后请务必盖紧笔盖，以防内容物挥发或干硬。  
Recap tightly after use to prevent the product from drying out or hardening.
  4. 使用内置削笔器削尖笔芯，可勾勒更清晰的眼线。  
Use the embedded sharpener to keep the pencil tip precise for more defined lines.
- ※ 卸妆时建议搭配唇部及眼部卸妆液使用，清洁更彻底。  
Cleanse with a lip & eye remover for complete cleansing.

※ 本图片颜色可能与实物略有差异。

※ The color shown in the image may differ slightly from the actual product.

For Your Beauty,,, 26



自动唇线笔

# Auto Lipliner Pencil

- 色彩饱满鲜明(Vibrant Colors)
- 质地柔滑顺畅(Smooth Texture)
- 持久上妆效果(Long-Lasting Effect)
- 实用容量，丰富色彩表现(Generous Size & A Variety of Colors)

ITEM NO : **DCK-2571** ITEM NAME : **DARKNESS 自动唇线笔No.1 裸粉色**  
Darkness Auto Lipliner NO. 1 Nude Pink



ITEM NO : **DCK-2572** ITEM NAME : **DARKNESS 自动唇线笔No.2 珊瑚粉**  
Darkness Auto Lipliner NO. 2 Coral Pink



ITEM NO : **DCK-2573** ITEM NAME : **DARKNESS 自动唇线笔No.3 正红色**  
Darkness Auto Lipliner NO. 3 Real Red



ITEM NO : **DCK-2574** ITEM NAME : **DARKNESS 自动唇线笔No.4 勃艮第红酒色**  
Darkness Auto Lipliner NO. 4 Burgundy Wine



ITEM NO : **DCK-2575** ITEM NAME : **DARKNESS 自动唇线笔No.5 红酒色**  
Darkness Auto Lipliner NO. 5 Red Wine



## 全成分(Ingredients)

### ●1号 裸粉色(No. 1 Nude Pink)

地蜡、云母 (CI.77019)、三乙基己酸酯、氢化植物油、氢化椰子油、二氧化钛 (CI.77891)、C12-15 醇醚己酸酯、聚异丁烯、红色氧化铁 (CI.77491)、巴西棕榈蜡、聚乙烯、微晶蜡、FD&C 黄色5号铝色淀 (CI.19)、硬脂酸锌、山梨坦倍半油酸酯、D&C 红色7号铝色淀 (CI.15850:1)、群青蓝 (CI.77007)  
CERESIN, MICA(CI.77019), TRIETHYLHEXANOIN, HYDROGENATED VEGETABLE OIL, HYDROGENATED COCONUT OIL, TITANIUM DIOXIDE(CI.77891), C12-15 ALKYL ETHYLHEXANOATE, POLYISOBUTENE, IRON OXIDE RED(CI.77491), EUPHORBIA CERIFERA(CANDELILLA)WAX, POLYETHYLENE, MICROCRYSTALLINE WAX, FD&C YELLOW#5 ALUMINUM LAKE(CI.19), ZINC STEARATE, SORBITAN SESQUIOLEATE, D&C RED NO. 7 CA LAKE(CI.15850:1), ULTRAMARINE BLUE (CI.77007)

### ●2号 珊瑚粉(No. 2 Coral Pink)

地蜡、三乙基己酸酯、氢化植物油、D&C 红色6号 (CI.15850)、氢化椰子油、二氧化钛 (CI.77891)、C12-15 醇醚己酸酯、聚异丁烯、巴西棕榈蜡、聚乙烯、黄色氧化铁 (CI.77492)、红色氧化铁 (CI.77491)、微晶蜡、FD&C 黄色5号铝色淀 (CI.19)、云母 (CI.77019)、硬脂酸锌、山梨坦倍半油酸酯、黑色氧化铁 (CI.77499)、D&C 红色7号铝色淀 (CI.15850:1)  
CERESIN, TRIETHYLHEXANOIN, HYDROGENATED VEGETABLE OIL, D&C RED NO. 6 (CI.15850), HYDROGENATED COCONUT OIL, TITANIUM DIOXIDE(CI.77891), C12-15 ALKYL ETHYLHEXANOATE, POLYISOBUTENE, EUPHORBIA CERIFERA(CANDELILLA)WAX, POLYETHYLENE, IRON OXIDE YELLOW(CI.77492), IRON OXIDE RED(CI.77491), MICROCRYSTALLINE WAX, FD&C YELLOW#5 ALUMINUM LAKE(CI.19), MICA(CI.77019), ZINC STEARATE, SORBITAN SESQUIOLEATE, IRON OXIDE BLACK(CI.77499), D&C RED NO. 7 CA LAKE(CI.15850:1)

### ●3号 正红色(No. 2 Real Red)

地蜡、三乙基己酸酯、云母 (CI.77019)、氢化植物油、氢化椰子油、D&C 红色7号铝色淀 (CI.15850:1)、C12-15 醇醚己酸酯、聚异丁烯、D&C 红色6号 (CI.15850)、FD&C 黄色5号铝色淀 (CI.19)、巴西棕榈蜡、聚乙烯、微晶蜡、硬脂酸锌、山梨坦倍半油酸酯、黄色氧化铁 (CI.77492)  
CERESIN, TRIETHYLHEXANOIN, MICA(CI.77019), HYDROGENATED VEGETABLE OIL, HYDROGENATED COCONUT OIL, D&C RED NO. 7 CA LAKE(CI.15850:1), C12-15 ALKYL ETHYLHEXANOATE, POLYISOBUTENE, D&C RED NO. 6 (CI.15850), FD&C YELLOW#5 ALUMINUM LAKE(CI.19), EUPHORBIA CERIFERA(CANDELILLA)WAX, POLYETHYLENE, MICROCRYSTALLINE WAX, ZINC STEARATE, SORBITAN SESQUIOLEATE, IRON OXIDE YELLOW(CI.77492)

### ●4号 酒红色(No. 2 Burgundy Wine)

地蜡、二氧化钛 (CI.77891)、三乙基己酸酯、红色氧化铁 (CI.77491)、氢化植物油、氢化椰子油、C12-15 醇醚己酸酯、聚异丁烯、巴西棕榈蜡、聚乙烯、微晶蜡、云母 (CI.77019)、硬脂酸锌、山梨坦倍半油酸酯、黄色氧化铁 (CI.77492)、黑色氧化铁 (CI.77499)  
CERESIN, TITANIUM DIOXIDE(CI.77891), TRIETHYLHEXANOIN, IRON OXIDE RED(CI.77491), HYDROGENATED VEGETABLE OIL, HYDROGENATED COCONUT OIL, C12-15 ALKYL ETHYLHEXANOATE, POLYISOBUTENE, EUPHORBIA CERIFERA(CANDELILLA)WAX, POLYETHYLENE, MICROCRYSTALLINE WAX, MICA(CI.77019), ZINC STEARATE, SORBITAN SESQUIOLEATE, IRON OXIDE YELLOW(CI.77492), IRON OXIDE BLACK(CI.77499)

### ●5号 红酒色(No. 2 Red Wine)

红色氧化铁 (CI.77491)、地蜡、三乙基己酸酯、氢化植物油、氢化椰子油、D&C 红色7号铝色淀 (CI.15850:1)、C12-15 醇醚己酸酯、聚异丁烯、云母 (CI.77019)、巴西棕榈蜡、聚乙烯、微晶蜡、硬脂酸锌、山梨坦倍半油酸酯Iron Oxide Red (CI.77491)  
IRON OXIDE RED(CI.77491), CERESIN, TRIETHYLHEXANOIN, HYDROGENATED VEGETABLE OIL, HYDROGENATED COCONUT OIL, D&C RED NO. 7 CA LAKE(CI.15850:1), C12-15 ALKYL ETHYLHEXANOATE, POLYISOBUTENE, MICA(CI.77019), EUPHORBIA CERIFERA(CANDELILLA)WAX, POLYETHYLENE, MICROCRYSTALLINE WAX, ZINC STEARATE, SORBITAN SESQUIOLEATE

## 使用方法(How to Use)

沿着唇形勾勒唇线。

Shape your lip line along the lip contour.

※ 本图片颜色可能与实物略有差异。  
※ The color shown in the image may differ slightly from the actual product.

For Your Beauty,,, 27





胎盘精华面膜

# Placenta Mask Pack

○ 美白・抗皱双重功效化妆品

Dual Functional Cosmetics for Whitening and Wrinkle Control

○ 高营养、高弹力、高保湿

High nourishment, high resilience, deep moisturization

含有具皮肤再生功效的水解胎盘提取物与水解胶原蛋白，可为松弛无光泽的肌肤带来紧致弹力。同时富含肽类、芦荟叶提取物与氨基酸复合物，一举实现高营养、高弹力与高保湿护理。添加烟酰胺与腺苷，帮助修护因压力而疲惫的肌肤，是一款兼具美白与抗皱功效的高端功能性面膜贴。

Formulated with revitalizing ingredients such as Hydrolyzed Placenta Extract and Hydrolyzed Collagen, this premium mask pack delivers firming elasticity to sagging, dull skin. In addition, Peptides, Aloe Vera Leaf Extract, and an Amino Acid Complex provide intensive nourishment, resilience, and moisturization all at once. Enriched with Niacinamide and Adenosine, it also helps restore stressed and tired skin, offering dual functionality for brightening and anti-wrinkle care.

ITEM NO : **DMK-0422**

ITEM NAME : **DARKNESS胎盘精华面膜(Darkness Placenta Mask Pack)**

[功效成分] 烟酰胺、腺苷 [Active Ingredients] Niacinamide, Adenosine

[容量] 27克(1片装) [Capacity] 27g(1EA)



## 全成分(Ingredients)

精制水、甘油、丁二醇、烟酰胺、黄原胶、羟丙基瓜尔胶、对羟基苯甲酸甲酯、苯氧乙醇、EDTA二钠、甜菜碱、海藻糖、泛醇、海水、芦荟叶汁、尿囊素、卡波姆、三乙醇胺、聚山梨酯-80、水解胎盘提取物 (500ppm)、腺苷、透明质酸钠、醋酸生育酚、水解胶原蛋白 (75ppm)、甘氨酸、丝氨酸、谷氨酸、β-葡聚糖、马齿苋提取物、天冬氨酸、亮氨酸、丙氨酸、赖氨酸、精氨酸、酪氨酸、苯丙氨酸、缬氨酸、乙基己基甘油、苏氨酸、脯氨酸、异亮氨酸、当归根提取物、覆盆子果提取物、桑白皮提取物、莲花提取物、黄芩根提取物、组氨酸、柠檬酸、蛋氨酸、半胱氨酸、山梨酸钾、苯甲酸钠、乙酰基六肽-8、铜三肽-1、香料

Water, Glycerin, Butylene Glycol, Niacinamide, Xanthan Gum, Hydroxypropyl Guar, Methylparaben, Phenoxethanol, Disodium EDTA, Betaine, Trehalose, Panthenol, Sea Water, Aloe Vera Leaf Juice, Allantoin, Carbomer, Triethanolamine, Polysorbate 80, Hydrolyzed Placenta Extract (500ppm), Adenosine, Sodium Hyaluronate, Tocopheryl Acetate, Hydrolyzed Collagen (75ppm), Glycine, Serine, Glutamic Acid, Beta-Glucan, Portulaca Oleracea Extract, Aspartic Acid, Leucine, Alanine, Lysine, Arginine, Tyrosine, Phenylalanine, Valine, Ethylhexylglycerin, Threonine, Proline, Isoleucine, Angelica Gigas Root Extract, Rubus Coreanus Fruit Extract, Morus Alba Bark Extract, Nelumbo Nucifera Flower Extract, Scutellaria Baicalensis Root Extract, Histidine, Citric Acid, Methionine, Cysteine, Potassium Sorbate, Sodium Benzoate, Acetyl Hexapeptide-8, Copper Tripeptide-1, Fragrance

## 使用方法(How to Use)

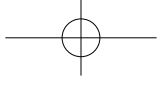
1. 洁面后使用化妆水调理肌肤。  
After cleansing, tonify your skin with toner.
2. 对准眼部位置，将面膜贴合于整个面部。  
Align the mask with the eye area and apply evenly over the entire face.
3. 放松静待20~30分钟后取下面膜。  
Leave on for 20~30 minutes and remove the mask.
4. 轻拍脸部，帮助精华吸收，完成护理。  
Gently pat the remaining essence into your skin for better absorption.



※ 本图片颜色可能与实物略有差异。

※ The color shown in the image may differ slightly from the actual product.

For Your Beauty,,, 28



睫毛膏乳液

# Mascara Emulsion

只需2~3滴，重现睫毛膏奇迹！

Just 2~3 Drops for a Mascara Miracle!

恢复干涸的睫毛膏，延长使用寿命，无结块更顺滑。

富含保湿成分与毛发主要成分角蛋白，有助于呵护睫毛健康。

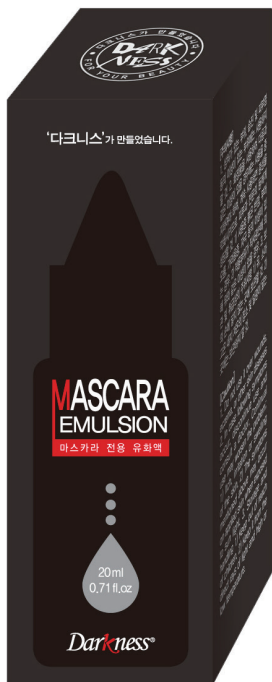
Revives dried-out mascara and extends its use without clumping.

With moisturizing ingredients and keratin, the main component of human hair, it also helps support healthier lashes.

ITEM NO : **DOK-1217**

ITEM NAME : DARKNESS睫毛膏乳液(Darkness Mascara Emulsion)

[容量] 20ml [Capacity] 20ml



## 全成分(Ingredients)

精制水、丙烯酸共聚物、乙醇、苯氧乙醇、氯苯甘醚、丁二醇、二丙二醇、水解角蛋白、水解胶原蛋白、茶树提取物、迷迭香提取物、薄荷叶提取物、香茅提取物、薰衣草花提取物、洋甘菊花提取物、野菊花提取物

Water, Acrylates Copolymer, Ethanol, Phenoxyethanol, Chlorphenesin, Butylene Glycol, Dipropylene Glycol, Hydrolyzed Keratin, Hydrolyzed Collagen, Tea Tree Extract, Rosemary Extract, Peppermint Leaf Extract, Camel Grass Extract, Lavender Flower Extract, Matricaria Flower Extract, Chrysanthemum Indicum Extract

## 使用方法(How to Use)

滴入2~3滴乳化液后，用刷头轻轻搅拌均匀，能有效恢复干掉的睫毛膏，延长使用时间。

Add 2~3 drops of the Emulsion into your mascara and mix with the brush to thin dried mascara for an extended product life.

※ 本图片颜色可能与实物略有差异。

※ The color shown in the image may differ slightly from the actual product.

For Your Beauty,,, 29

迷迭香润肤油霜(适用于所有肤质)

# Rosemary Oil Cream(All Skin Type)

○ 含有0.3%的迷迭香精油

It contains 0.3% of rosemary oil

○ 粗糙的双手、手肘、膝盖、干裂的脚部与脚跟

Rough hands, Elbows, Knees, cracked feet and heels

○ 发痒敏感肌肤

Itchy sensitive skin

富含迷迭香精油，能够温和滋润因外界环境影响而变得脆弱干燥的肌肤，帮助肌肤恢复健康状态，令其更加水润亮丽。

It makes the skin, that became weakened and dry by the environment, soft and moist and will cultivate the skin more healthy and beautiful with rosemary oils.

· 情况较严重时，每周可在双手厚敷一次，并用塑料手套或保鲜膜包裹约20分钟。

· 使用于角质较重的脚部时，先用磨脚工具软化粗糙硬皮，再取适量本品按摩吸收，之后用塑料袋或保鲜膜包裹即可。

· 搭配DARKNESS手膜与足膜使用，效果更佳。

※ 睡前请务必取下塑料手套或保鲜膜后再入睡!!

· In severe cases once a week after applying plenty of it to hands, cover up them with vinyl gloves or wrap and leave for 20 minutes.

· In the case that it is applied to the foot with severe keratin after softening the split and hard part with a buffer take an appropriate amount of this products with hands and massage it and cover it with vinyl pack or wrap and leave as it is.

· It is more effective to use with a darkness hand pack and a foot bag.

※ For bedtime, please remove the vinyl gloves, vinyl pack, and wrap!



ITEM NO : DFK-0612

ITEM NAME : 迷迭香润肤油霜(适用于所有肤质)  
Darkness Rosemary Oil Cream(All Skin Type)

[容量] 100ml(1EA) [Capacity] 100ml(1EA)

## 全成分(Ingredients)

精制水、甘油、鲸蜡醇、癸基油酸酯、聚甘油-3 甲基葡糖二硬脂酸酯、二甲硅油、苯氧乙醇、辛酸甘油酯、迷迭香叶油 (0.1%)、甜杏仁油、牛油果油、泛醇、橄榄油、乳木果脂、尿囊素、EDTA 二钠、迷迭香叶提取物 (0.009%)、锦葵根提取物、芦荟叶提取物、马尾藻提取物、海带提取物、褐藻提取物、丁二醇、水解胶原蛋白、1,2-己二醇

Water, Glycerin, Cetearyl Alcohol, Decyl Oleate, Polyglyceryl-3 Methylglucose Distearate, Dimethicone, Phenoxyethanol, Glyceryl Caprylate, Rosmarinus Officinalis (Rosemary) Leaf Oil(0.1%), Prunus Amygdalus Dulcis (Sweet Almond) Oil, Persea Gratissima (Avocado) Oil, Panthenol, Olea Europaea (Olive) Fruit Oil, Butyrospermum Parkii (Shea) Butter, Allantoin, Disodium EDTA, Rosmarinus Officinalis (Rosemary) Leaf Extract(0.009%), Althaea Rosea Root Extract, Aloe Barbadosensis Leaf Extract, Sargassum Fulvellum Extract, Laminaria Japonica Extract, Ecklonia Cava Extract, Butylene Glycol, Hydrolyzed Collagen, 1,2-Hexanediol

## 使用方法(How to Use)

将粗糙部位(如手部、手肘、膝盖、脚后跟等)清洁后擦干，取适量本品轻柔按摩涂抹至吸收。根据干燥程度可随时补擦。

Wash the rough parts (hands, elbows, knees, heels, etc.) and then wipe them clean and dry, and take an appropriate amount, spread gently as massaging and let them absorbed. (please apply as often as possible depending on the level of dryness)

※ 本图片颜色可能与实物略有差异。

※ The color shown in the image may differ slightly from the actual product.

For Your Beauty,,, 30